



# SHELL CHAIR

Shell Chairs for every occasion, easy to use in community or facility environments



World's leading high stretch, durable and breathable healthcare fabric



Maximises Independence & Function

Lightweight Ergonomic Design

Customisable Postural Support

Genuine Dartex PU Fabric

Height Adjustable Seat Mount



[www.doability.com.au](http://www.doability.com.au)  
1300 122 355



# SHELL CHAIR

The Shell Chair is a comfortable mobile seating solution designed to maximise user access and social interaction within an Aged Care Facility or Healthcare environment. The compact design allows access under tables for sharing meals, games and other activities. The lightweight frame with anterior tilt function for sit to stand transfers reduces the manual handling burden for caregivers.

✓ DVA Contracted

✓ Tested and Compliant with Relevant AS/NZS/ISO Standards

✓ Shell Chair is registered in the ARTG, AUST R ARTG 277232

Forward tilt functionality assists with chair egress and standing transfers. Backwards tilt functionality assists in pressure redistribution and patient stability during transfers.

Forward Tilt (-3°)

Backward Tilt (27°)



2 YEAR WARRANTY

Frame

1 YEAR WARRANTY

Fabric

### COMFORT & SUPPORT

Ergonomic wing headrest and lumbar cushioning for improved seating posture



### SAFETY LAP BELT

Supportive lap belt designed with a single pull strap for convenient adjustment. Can also be tucked out of the way when not in use



### REMOVABLE SEAT CUSHION

Facilitates acute pressure care options such as utilising a ROHO cushions



### ERGONOMIC LEG REST

The supportive leg rest automatically raises or lowers as the chair is tilted (pictured with optional footplate - CHP198925)



### ATTENDANT CARER PUSH HANDLE

Ergonomically designed, tilt trigger lever makes postural adjustment a simple task



### STORAGE POCKET

Conveniently carries everyday items such as clip boards, magazines or diaries



### ADJUSTABLE SEAT HEIGHT

Seat height can be adjusted by up to 80mm allowing the chair to be used at a desk or dining table



### LIGHTWEIGHT AND MANOEUVRABLE

12.5" rear wheels with attendant foot brake, 5" front swivel castors together with a lightweight design, makes for easy and safe handling for caregivers and a smooth and comfortable ride for users

# CLINICAL CONSIDERATIONS

## OPTIMISES USER INDEPENDENCE

- Anterior tilt functionality assists with chair egress and standing transfers, maximises a user's independence in a safe manner

## ANTHROPOMETRIC CONSIDERATIONS

- Two sizes available, with height adjustment, to ensure correct fit and postural support

## FATIGUE MANAGEMENT

- The 27° tilt allows users to relax whilst sitting unassisted

## PRESSURE INJURY MANAGEMENT

- Dartex fabric is high stretch reducing the risk of shear and friction
- The tilting feature allows pressure redistribution

## OEDEMA MANAGEMENT

- Raised leg positioning to assist with lower limb oedema

- Compatible with other, pressure relieving cushions

## IMPROVES SOCIALISATION

- Lightweight and compact design improves access to social activities such as group dining

## REDUCED MANUAL HANDLING BURDEN

- A lightweight design and small footprint to make manoeuvring the chair easier for caregivers
- The anterior tilt function means that a user can be more independent in sit-to-stand transfers, reducing the need for more than one carer to assist
- As a result, the need for manual handling equipment is reduced

# TECHNICAL SPECIFICATIONS

	Seat Width	Overall Width	Seat Depth	Armrest Height	Seat Height (with 7cm cushion)	Tilt Angle	Overall Length	Overall Weight	Max User Weight
<b>Medium CHP198910</b>	450mm	700mm	440mm	230mm	450 - 530mm	-3° Forward Tilt +27° Backward Tilt	890mm	30kg	135kg
<b>Large CHP198915</b>	510mm	720mm	470mm	230mm	450 - 530mm	-3° Forward Tilt +27° Backward Tilt	890mm	30kg	135kg

\* Chair measurements may vary +/- 10mm due to upholstery tolerances

\* Seat width is taken between the thickest sections of armrest padding

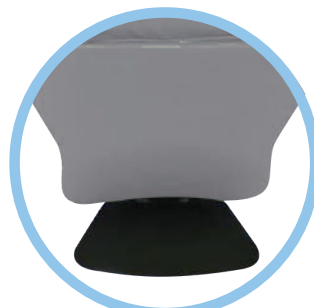
## ACCESSORIES

### SUPPORT & PRACTICAL USE

✓ Shell Chair Accessories are registered in the ARTG, AUST R ARTG 277232



Pillow Headrest  
CHP198930



Footplate  
CHP198925



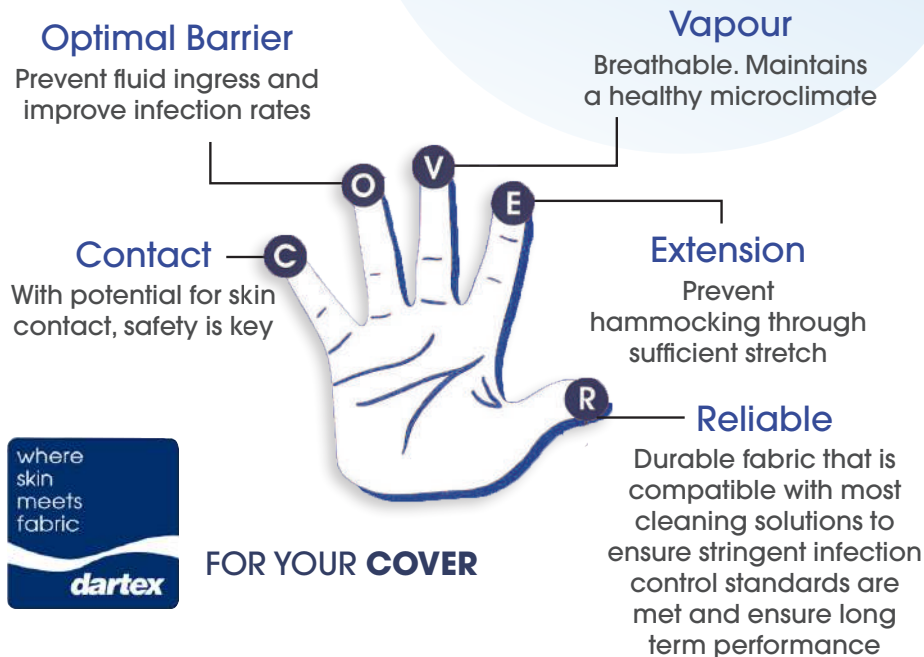
Retractable  
Lap Tray  
CHP198920

# PATIENT SURFACE

## GENUINE DARTEX® PU FABRIC

Well respected in the health care industry, Dartex® PU fabric is the perfect patient surface solution for treatment and management of pressure injuries through its 5 key characteristics (Figure 1.1).

FIGURE 1.1



## PATIENT & CARER BENEFITS



Designed specifically for pressure care needs



Removable Anti-Bacterial/ Anti-Microbial cover for infection control management



Waterproof yet breathable for improved skin micro-climate

## EXTERIOR SURFACE

Brown (leather-style) healthcare fabric has waterproof, anti-fungal, anti-bacterial and fire retardant properties.

## PATIENT SURFACE

Dartex Cool Grey

- High stretch fabric for pressure reduction
- Vapour permeable (breathable)
- Anti-bacterial
- Anti-fungal
- Fire retardant

## CUSHION SURFACE

- Removable seat cushion facilitates pressure care options
- Compatible with after-market seating such as ROHO cushions



[www.doability.com.au](http://www.doability.com.au)

1300 122 355

# ASSOCIATED PRODUCTS



LIFTERS & SLINGS



TRANSFER AIDS



MOBILE AIR CHAIRS



THERAPY & EXERCISE



CRUTCHES,  
FRAMES & STICKS



SCOOTERS



OVERBED TABLES



BED STICKS & POLES



FOAM MATTRESSES



AIR MATTRESSES



COMMODOES  
URINALS & BED PANS



SIGNATURE CHAIR



SHOWER STOOLS & CHAIRS



RAISED TOILET SEATS



SHOWER COMMODOES



VOGUE WALKERS



SEAT WALKERS



WHEELCHAIRS



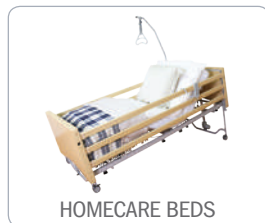
STD POWER WHEELCHAIRS



PRESSURE CUSHIONS

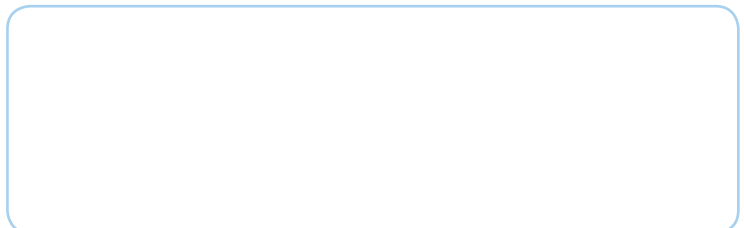


DAY CHAIRS



HEMOCARE BEDS

Distributed by:



ASBR14.23 100118

