

Standz_{by} Jenx

A versatile standing system offering Prone or Supine standing that accommodates abducted or neutral leg positioning for children between 1 - 9 years



Always Supportive...

www.doability.com.au
1300 122 355
support@doability.com.au
info@doability.com.au


DoAbility
What we do, helps you.
Since 2002

Standz by Jenx

Inspired by the clinical benefits of abducted standing and created alongside therapists and carers all over the world ensures the perfect combination of clinical positioning with simplicity of use. Standz offers Prone or Supine standing and easily accommodates either abducted or neutral leg positioning for children between the ages of 1-9 years.

Leg length discrepancy is easily accommodated by the individual control for knee and foot positioning, and all adjustments are tool free to enable quick and effective clinical postural adjustments. With an extensive range of accessories, Standz can accommodate children with a wide range of postural requirements.



Showing Standz in Prone

INNOVATIVE FEATURE

Safety Lock

Built in safety lock for frame angle adjustment – Ideal for those busy environments where there is potential for accidental activation of an unlocked mechanism.

INNOVATIVE FEATURE

Tray Holder

This clever accessory offers convenient storage when the tray is not in use.

INNOVATIVE FEATURE

Angle Gauges

Built in angle gauges for frame angle and individual leg abduction - easy to read gauges enable precise positioning and allow for the correct position to be repeatedly achieved.

INNOVATIVE FEATURE

Individual Leg Adjustment

Adjustment for both knee and footplate height – Ideal for accommodating leg length discrepancy. This tool free adjustment can be made in seconds and securely clamps into place using our clever clamping marquee design.

INNOVATIVE FEATURE

Individual Leg Abduction

Standz offers the ability to independently adjust either leg from 0 – 30 degrees of abduction depending on the child's clinical needs. Simply adjusted through a wing knob clamp, this action is quick and simple to adjust for each standing session.

INNOVATIVE FEATURE

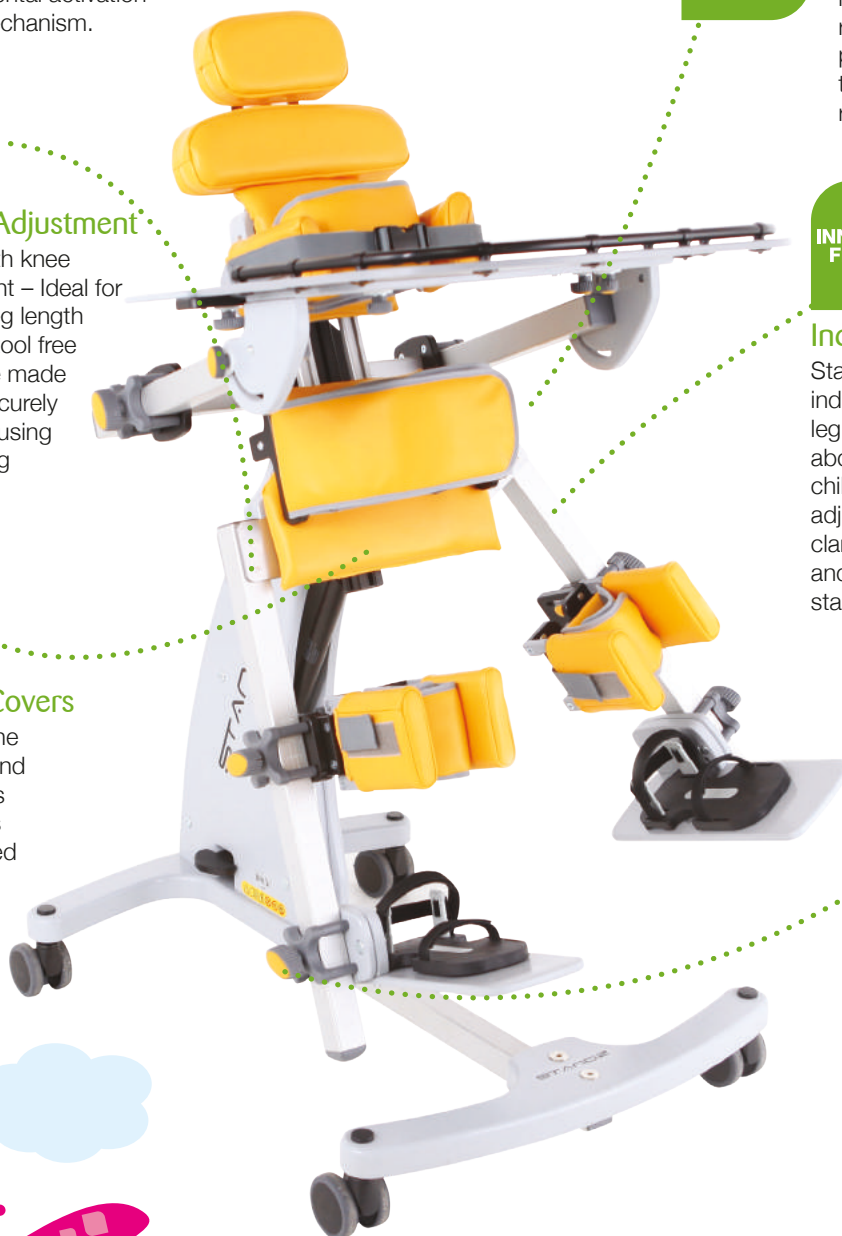
Antimicrobial Covers

As standing aids the digestive system and gravity can take it's course, our covers have been designed to wipe clean, they also contain an antimicrobial agent to aid infection control.

INNOVATIVE FEATURE

Tool Free Adjustments

No more hunting for the right sized allen key, cleverly designed wing knobs offer a comfortable grip to enable effective clamping with minimal effort – meaning growth adjustments have never been easier.



Always Configurable Accessories

As standard each base comes with:

- Four locking castors
- Tilt mechanism with foot pedal release and safety lock as standard
- Two leg posts clearly marked with numbers for easy positioning of leg supports
- 0 – 30 degree independent abduction movement of leg posts
- Individual footplates with plantar and dorsiflexion movement
- Angle gauge to read frame angle – frame angle range of 0 – 90 degrees
- Pelvic support board and cover pad in a choice of four colours
- Trunk support board and cover pad in choice of four colours

In addition to the base you will need to add the following accessories to ensure a minimum safe configuration.

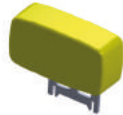
Prone – sandals, knee support, pelvic support & trunk support.

Supine – sandals, knee support, knee support straps, pelvic support, trunk support & head support.

Head Support Options

Flat Pad Head Support

A simple yet effective head support pad for use in supine for children with reasonable head control. It can also be used in prone to extend the height of the chest pad.



Oval or Moulded PU Head Support

Simple headrest for children who require minimal head support. Comes mounted on a flexible fixing bracket.



Multigrip™ Headrest

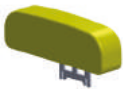
The original and innovative Jenx Multigrip™ is available in three sizes. All Jenx Multigrip™ head supports have a choice of highly flexible fixing brackets, all of which give adjustment for height, depth and angle.



Shoulder Support Options

Flat Shoulder Support

A simple yet effective wide pad for supporting the shoulders when using Standz in a supine position.



Multigrip™ Shoulder Support

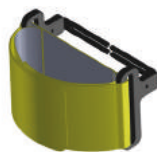
To provide extra support for the shoulders.



Trunk Positioning Options

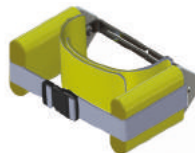
Rotation Control Strap with Fixings

A wide support belt designed to be used to position the pelvis, trunk or both together. Threaded through the support fixings the strap can be fastened securely around the child and then be pulled to facilitate extension or rotation.



Lateral Supports with Strap

Firm lateral support pads offer stability to the trunk, pelvis or both together, and the incorporated support strap can be used to facilitate extension or rotation.



Leg & Pelvic Positioning Options

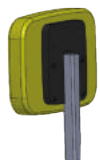
Pelvic Support Board

For use in prone positioning only, the pelvic support board offers a full contact surface to facilitate the full extension of the pelvis and prevent pelvic rotation, pelvic obliquity and unwanted hip flexion.



Pelvic Support Board - Back Pad

Used in conjunction with the pelvic support board, the back pad offers support for the child's upper back. A head support can also be mounted to the back pad to help keep a neutral head position for those children who hyper extend their neck when standing in prone.



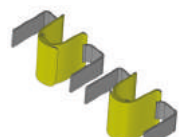
Standard Knee Support

Individual knee supports offering the ability to accommodate knee flexion when used in supine (requires knee straps when used in supine). Width adjustable to correctly gutter the knee in position.



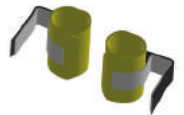
Standard Knee Strap

Intended for use in conjunction with the standard knee supports, the standard knee strap simply holds the knee in the desired position and prevents knee flexion from occurring.



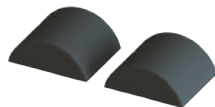
De-Rotational Knee Straps

Intended for use in conjunction with the standard knee supports the De-Rotation straps allow for a cuffing of the child's leg and allow for control of internal or external knee rotation.



Arched Foam Pad

A simple foam pad that is shaped to fit behind the knee to ensure a comfortable standing position when accommodating knee flexion.



Sandals

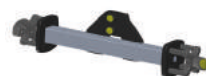
Available for Standz in either size 1 or 2, these sandals ensure solid foot placement to give the foundation for effective leg positioning and safe standing.



Trays & Accessories

Tray Mounting Bracket

Required to mount the multi-position tray – simply slots onto the Standz base and is adjusted using simple, comfortable wing knobs. Allows for the tray to be quickly changed from supine to prone or vice-versa, with no need to remove the mounting bracket.



Multi-position Tray

Cleverly designed to be used in both prone and supine, the tray is angle adjustable to ensure the correct position in either application.



Tray Extension Wings

Strongly recommended for use in supine and just as effective when used in prone, these wings attach to the rear of the tray to offer a support surface for the child's elbows and prevents arms from slipping off the tray.



Tray Holder

A clever addition that offers a solution of where to store the tray when it is not being used.



Anti-tamper Conversion Kit

Allows for all wing knob adjustments to be converted to a tool fixing – ideal for environments where other children may tamper with the original wing knobs.



Standz by Jenx Technical Specifications

	Units	Prone	Supine
Angle Range	degrees	0° - 90°	90° - 0°
Age Range (approx)	yrs	1 yrs - 9 yrs	1 yrs - 9 yrs
Max User Height	mm	1380	1380
Frame Width	mm	635	635
Frame Length	mm	900	900
Minimum Height (footplate to top of chestplate)	mm	580	580
Maximum Height (footplate to top of chestplate)	mm	1000	1000
Chest Pad Width (min/max)	mm	180 - 300	180 - 300
Hip Pad Width (min/max)	mm	180 - 300	180 - 300
Kneeblock Width (centre to centre) (min)	mm	120	120
Height of Stander (floor to top of upper pad) (max)	mm	1080	1080
Height of Stander horizontal (floor to support board)	mm	n/a	810
Leg Abduction	degrees	30°	30°
User Weight	kg	45	45
Footplate Angle (dorsiflexion)	degrees	10°	-25°
Footplate Angle (plantarflexion)	degrees	-25°	10°

Always here

To arrange a demonstration or assessment with the Standz, just get in touch!

My name is:

Please ring me on:

Or email me at:

Your Standing Frame Specialists



Contact your DoAbility consultant to arrange a Standz demonstration!

Seating

Standing

Sleeping

Therapy

Mobility

Bathroom

How can DoAbility help you?

Call us for a chat on 1300 122 355

Or email us at support@doability.com.au
info@doability.com.au

For all the info visit www.doability.com.au/

