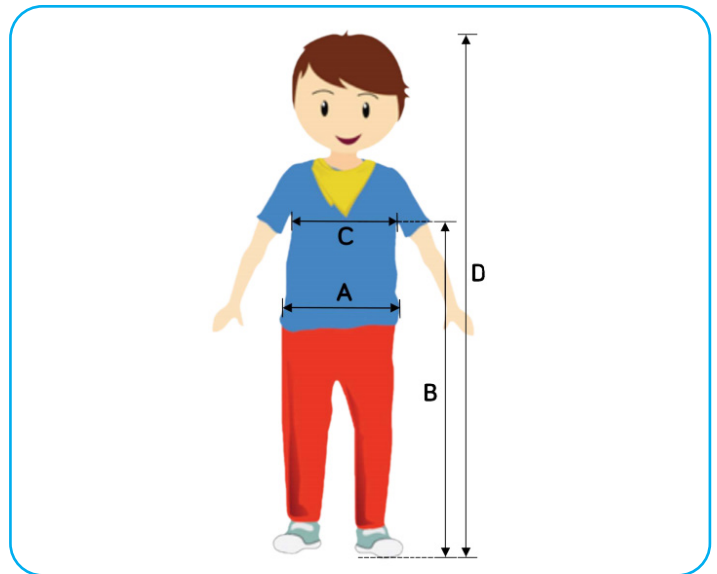


# Jenx Standz



# Client Details

Client/User name:	
Date:	
DOB:	
User measurements	
A Hip Width	
B Axilla Height	
C Chest Width	
D Overall User Height	
User Weight	



Product Specifications	
Average Age	1 - 9 Years
Weight Capacity	45 kg
Hip Width	17.5cm - 30.5cm
Hip Height	45cm - 70cm
Chest Width	17.5cm - 30.5cm
Chest Height	58cm - 100cm
Max Height	138cm
Tilt Range (90 Degrees = Upright)	5° to 90°
Frame Width	64.5cm
Frame Length	89cm
Height of surface when horizontal	81cm
Abduction Range	30° Either Leg

## Key

Blue	Suitable for <b>Prone and Supine</b>
Green	Suitable for <b>Supine only</b>
Yellow	Suitable for <b>Prone only</b>

# Base unit

## Standz Basic Package

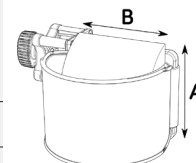
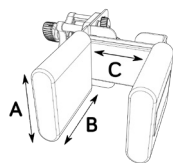
Tool free adjustment standing frame includes base with castors, hydraulic assisted tilt, pelvic and trunk support pads with strap, abducting legs, foot positioning plates, tray mount.

5240-0005-044



# Knee support options

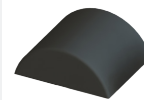
Standard Knee Support	Multi-Axis Knee Support
Dual wall knee supports with accessories available for extra function (see below)	Width, height, depth and angle adjustable, with soft arched foam pads behind the knee and support straps to enable knee flexion.
5240-1750-044	5240-1770-044
A: 11.5cm, B: 12.5cm, C: 9.5cm & Min: 6.5cm	A: 13.5cm & B: 11.5cm



\*Products with outline are required and an option must be selected.

# Accessories for Standard Knee Support

Standard Strap <small>(Required for Supine use)</small>	De-rotational Strap	Arched Foam Pads <small>(Recommended for Supine use)</small>
Holds knee in position and prevents knee flexion. Can also be used in Prone.	Adjustable strap for reducing internal or external rotation.	Ensures a comfortable standing position when accommodating knee flexion. Purchase individually.
5240-1766-044	5240-1786-044	5353-1775-000
		13.5cm W x 13.5 cm T x 5.5cm D



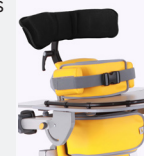
# Foot support options

Size 1 sandals	Size 2 sandals
Ensure solid foot placement	Ensure solid foot placement
5356-6081-000	5356-6082-000
8cm x 17cm long	9.5cm x 22cm long



# Head support option (Supine only)

Flat Pad	1 Link Multigrip™	2 Link Multigrip™	3 Link Multigrip™
For children with reasonable head control. Can also be used as chest pad in prone.	Single link wings for some degree of lateral support.	2 Links in each wing for extra support and positioning.	3 adjustable links in each wing for ultimate lateral headrest control and comfort.
5240-4110-044	5356-4601-000	5356-4602-000	5356-4603-000
19cm W x 10cm H	33cm W x 5cm D x 7.5cm H	47.5cm W x 5cm D x 12cm H	62cm W x 5cm D x 12cm H



# Shoulder support option (Supine only)

## Flat Shoulder Support

Shoulder support for supine use only  
(too wide for prone)

5240-2750-044

31.5cm W x 9.5cm H



## Multigrip body support (for prone and supine)

Adjustable contour shoulder support

5240-2721-044

41cm Wide at Max Width



# Pelvic support options (Prone only)

## Pelvic Support Board

Lower back support

5240-1901-044

19.5cm W x 15cm H



## Back Pad (Requires Pelvic support board)

Central back support

5240-2402-044

19.5cm W x 15cm H



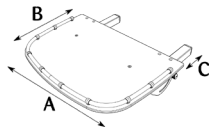
# Tray

## Multi-position tray (mounts to bracket in base package)

Includes extension wings.  
Suitable for both prone and supine use.

5240-7112-044

A: 58.5cm & B: 39.5cm  
C: (Prone - 25cm, Supine - 45cm)



# Tray options

## Tray holder (useful for Supine)

When in Supine, the tray needs to be removed to remove the child. Place the tray on the convenient tray holder to avoid tripping.

5240-7365-000





What we do, helps you.

Since 2002

11 Ascot Vale Road  
Flemington Vic 3031

Phone: 1300 122 355

Fax : 03 9329 7327

[support@doability.com.au](mailto:support@doability.com.au)

[info@doability.com.au](mailto:info@doability.com.au)

[www.doability.com.au/](http://www.doability.com.au/)

