



Berollka Thessa Seating System

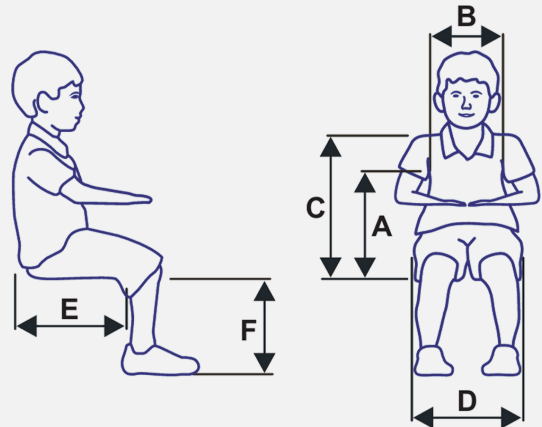
Script Form

Client Details

 First and Last Name

 Date / /

Measurements

A Armpit height
B Chest width (TW)
C Back height (BH)
D Seat width (SW)
E Seat depth (SD)
F Lower leg length (LLL)


		Size 1	Size 2	Size 3
SW	Seat Width	18 - 26cm	24 - 32cm	30 - 38cm
SD	Seat Depth	16 - 28cm	22 - 34cm	28 - 42cm
BH	BH (Standard Upper Back)	30 - 35cm	35 - 40cm	42 - 52cm
	BH (Long Upper Back)	33 - 38cm	40 - 50cm	50 - 62cm
TW	Chest Width	16 - 26cm	22 - 32cm	28 - 38cm
BA	Back Angle		80° - 120°	
SA	Seat Angle		-6° - 35°	
KA	Knee Angle		90° - 180°	
LLL	LLL Adjustment - Short	16 - 25.5cm	22 - 33.5cm	28 - 43.5cm
	LLL Adjustment - Standard	18.5 - 28cm	24.5 - 36cm	30 - 45cm
SH	Seat Height		25 - 65cm	
WF	Base Frame Width	55cm	55cm	63cm
TL	Total Length	82cm	90cm	90cm
	Total Height - Min.	58.5cm	60cm	67cm
	Total Height - Max.	101cm	105cm	118cm
AH	Armrest Height	13.5 - 20cm	16 - 24cm	18 - 29cm
	Max Load	30kg	40kg	50kg
	Weight	27.6kg	30kg	33.8kg

Berollka Thessa

Come as standard with:

- Seat height adjustment supported by gas spring
- Seat tilt supported by gas spring
- Smooth-running (75mm) castors, with push down brakes
- Seat base with lower back unit
- 3cm Seat cushion and cover
- Push handles
- Armrest height, angle, width, and depth adjustable.
- Single piece footplate



Script Form Start - Thessa Size and Colour

REQUIRED*:

Chair Size



Thessa Size 1
(K4001)



Thessa Size 2
(K4002)



Thessa Size 3
(K4003)

REQUIRED*:

Upholstery Colour

Fabric:



 **Black** (CO390)



 **Ultramarine** (CO350)



 **Pink** (CO341)



 **Red** (CO330)




 **Petrolgreen** (CO361)

Vinyl:



 **Black** (MM190)



 **Azur** (MM150)



 **Lavender** (MM140)



 **Red** (MM130)



 **Kiwi** (MM161)

REQUIRED*:

Frame Colour



White Matte (79)



Satin Black (58)



Lower Body Supports

ADD ON (OPTIONAL):

Pelvic Guides Pad
(K4111)
(pair)

Width and angle adjustable



1) Bracket Size*:

- Short Bracket**
(for standard cushion - 3cm)
- Long Bracket**
(for anatomical cushion - 5cm)

2) Pad size*:

- Small (7.5cm H, 9cm D)
- Medium (7.5cm H, 10cm D)
- Large (10cm H, 14cm D)

ADD ON (OPTIONAL):

Thigh Guidance Pad
(K4111)
(pair)

Width and angle adjustable



1) Bracket Size*:

- Short Bracket**
(for standard cushion - 3cm)
- Long Bracket**
(for anatomical cushion - 5cm)

2) Pad size*:

- Small (7.5cm H, 9cm D)
- Medium (7.5cm H, 10cm D)
- Large (10cm H, 14cm D)

ADD ON (OPTIONAL):

Led Guidance (two-winged)
(K4302)
(pair)

Width and angle adjustable



1) Pad size*:

- Small (7.5cm H, 9cm D)
- Medium (7.5cm H, 10cm D)
- Large (10cm H, 14cm D)

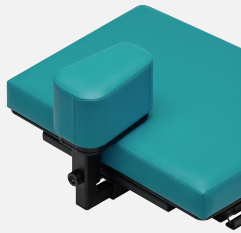
Abduction Wedge

ADD ON (OPTIONAL):



Abduction Wedge - Pluggable
(K4302)

(pair)



Wedge size*:

Small

Medium

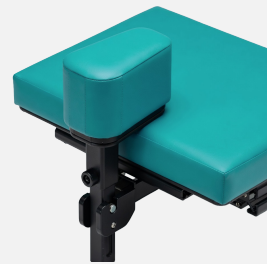
Large

ADD ON (OPTIONAL):



Abduction Wedge - Foldable
(K4303)

(pair)



Wedge size*:

Small

Medium

Large

Seat Cushion

COMES AS STANDARD



Standard Cushion (3cm, with cover)
(K4303)



Additional Covers:

Additional Seat Cover
(K4106)

Incontinence Seat Cover
(K4102)

ADD ON (OPTIONAL):

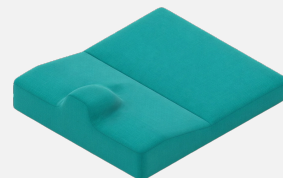


Anatomical Seat Cushion (with cover)
(K4303)

Seat Cushion Thickness Dimensions:

Front: 5cm

Back: 3cm



Additional Covers:

Additional Seat Cover
(K4107)

Incontinence Seat Cover
(K4102)

Footrest Options

ADD ON (OPTIONAL):



Footrest
(K4302)



Footrest size*:

- Size 1/2 - 32cm Width
- Size 3 - 40cm Width

Angle Adjustment:

- Standard (Fixed)
(K4501)
- Lockable (at 90°)
(K4502)
- Infinitely adjustable
(-16° to 0° angle)
(K4502)
- Lockable angle
(-20° to 0°)
(K4502)

ADD ON (OPTIONAL):



Single calf pad
(K4505)



ADD ON (OPTIONAL):



Foot strap with padding
(K4525)

Pad length: 12cm
Pad height: 5cm

ADD ON (OPTIONAL):



Padding for heel edge on footrest
(K4528)

View Accessory Details


Scan the QR code for all sizing and accessory options for the Thessa



Headrests

ADD ON (OPTIONAL):

Headrest Standard
(K4302)



Headrest size*:

Mini
 Medium


Headrest in fabric colour (1-piece)
- Depth, angle, and height adjustable

Additional Covers:

Additional Headrest Cover
(K4246)

ADD ON (OPTIONAL):

Headrest Light
(K4303)



Headrest size*:

Mini
 Medium

Additional Covers:

Additional Headrest Cover
(K4247)

ADD ON (OPTIONAL):

Universal holder 20x20 for third-party headrests
(K4528)

ADD ON (OPTIONAL):

Positioning aid for Headrest Light
(K4244)

Lateral Supports

ADD ON (OPTIONAL):

Lateral Support - Screwed, adjustable in height, width, and angle
(pair) (K4251)



Lateral size*:

Small
 Medium
 Large

ADD ON (OPTIONAL):

Lateral Support - Swing-away, adjustable in height, width, and angle
(pair) (K4252)



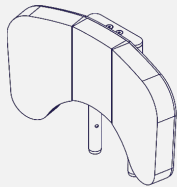

Lateral size*:

Small
 Medium
 Large

Backrest Options

ADD ON (OPTIONAL):

Standard Upper Back



- Upper back unit with cushion and cover.
- Height adjustable, and removable

Standard Upper Back - Size 1
(K4201)

- Can be used on:
- Thessa Size 1
 - Thessa Size 2

Back Height: 30-35cm
Width: 32cm

Standard Upper Back - Size 2
(K4202)

- Can be used on:
- Thessa Size 1
 - Thessa Size 2
 - Thessa Size 3

Back Height: 35-40cm
Width: 36cm

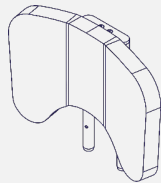
Standard Upper Back - Size 3
(K4203)

- Can be used on:
- Thessa Size 2
 - Thessa Size 3

Back Height: 43-52cm
Width: 38cm

ADD ON (OPTIONAL):

Long Upper Back



- Upper back unit with cushion and cover.
- Height adjustable, and removable

Long Upper Back - Size 1
(K4211)

- Can be used on:
- Thessa Size 1
 - Thessa Size 2

Back Height: 33-38cm
Width: 26cm

Long Upper Back - Size 2
(K4212)

- Can be used on:
- Thessa Size 1
 - Thessa Size 2
 - Thessa Size 3

Back Height: 40-50cm
Width: 32cm

Long Upper Back - Size 3
(K4213)

- Can be used on:
- Thessa Size 2
 - Thessa Size 3

Back Height: 50-62cm
Width: 38cm

Armrest Options

COMES AS STANDARD:

Armrest pad width- and depth adjustable and height and angle adjustable, rigid armrest holder
(K4401)



Armrest size*:

- Extra Short (L=17.5cm)
standard at size 1
- Short (L=17.5cm)
standard at size 2 & 3

ADD ON (OPTIONAL):

Armrest holder angle adjustment via gear segment
(K4402)



Additional Gas Spring

ADD ON (OPTIONAL):

Additional Gas Springs

Standard quantity of mounted gas springs:

Size 1	Size 2	Size 3
1x	1x	2x



1x Additional Gas Spring
(K4015)

- Recommended from 30kg load

2x Additional Gas Spring
(K4015)

- Recommended from 40kg load
- Not for Thessa Size 3

Castors

STANDARD:

Smooth Running Castors, plastic 75mm
(K4611)

- With 4 parking brakes

ADD ON (OPTIONAL):

Smooth Running Castors, plastic 100mm
(K4612)

- With 4 parking brakes

ADD ON (OPTIONAL):

Smooth Running Castors, plastic 125mm
(K4613)

- With 4 parking brakes

Therapy Tables

ADD ON (OPTIONAL):

One-side, foldable to the side therapy tray



Grey (plastic)
(K4441)

Transparent
(K4443)

ADD ON (OPTIONAL):

Two-sided, pluggable therapy tray

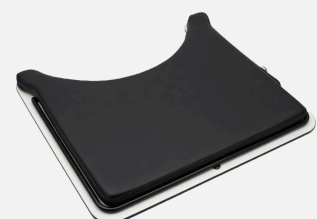


Grey (plastic)
(K4442)

Transparent
(K4444)

ADD ON (OPTIONAL):

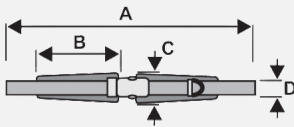
Table cushion for therapy tray (black)
(K4445)



Pelvic Harness

ADD ON (OPTIONAL):

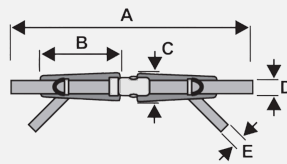
2-point Pelvic harness with pad
(K4311)



- Harness size*:**
- Small
 - Medium
 - Large

ADD ON (OPTIONAL):

4-point Pelvic harness with pad
(K4312)



- Harness size*:**
- Small
 - Medium
 - Large

ADD ON (REQUIRED):

Seat belt mounting kit
(K4618)

4x Flap buckles 25mm and mounting
Required for Pelvic Harnesses

Chest Harness

ADD ON (OPTIONAL):

Chest harness



Style*:

- Chest Harness (K4261)
- With Zip Fastener (K4262)

Harness size*:

- X-Small
- Small
- Medium
- Large
- X-Large

ADD ON (REQUIRED):

Chest harness mounting kit
(K4618)

4x Flap buckles 25mm and mounting
2x Shoulder guidance
Required for Chest Harnesses

View Accessory Details

Scan the QR code for all sizing and accessory options for the Thessa

